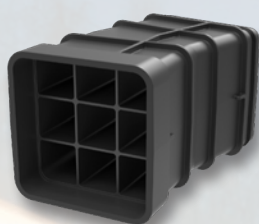


MM-237-01

Utilis Multiduct Pipe

Utilis multiduct pipe (also called QA duct) is the ideal solution when several cables are to be installed, but need to be separated from each other. Often used along railways and at stations, but also at road crossings, energy distribution stations, workshop structures, bridges and viaducts.

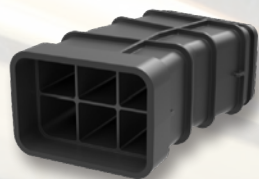


Light

All versions weight lower than the Arbo standard and can therefore be assembled without tools.

High strength SN140-150

More than 17 times stronger than a SN8 pipe and is therefore ideally suited where heavy traffic loads require tougher cable protection. This means it also requires less cover when installed (closer to surface).



Requires less space

Save 40% space compared to separate pipe installations. Installation costs are therefore also lower.

100% recyclable plastic

CFC-free HDPE spray quality.



Tailor-made accessories

For example, specific bends of a certain radius.

Completely waterproof

Thanks to the smart rubber sealing, the pipes are 100% waterproof.

Specifications:

Material: HDPE (spray quality), 100% recyclable, CFC-free

Pipe length: 1000mm

Flexibility: 2° / m

E-modules: 1000N / mm² (min)

Tensile strength: 20N / mm² (min)

Load capacity: 100kN / mm² (min)

Density: 0.96g / cm³ (min), non-foamed

Operating temperature: -30°C - + 60°C

Installation temperature: -5°C - + 40°C

